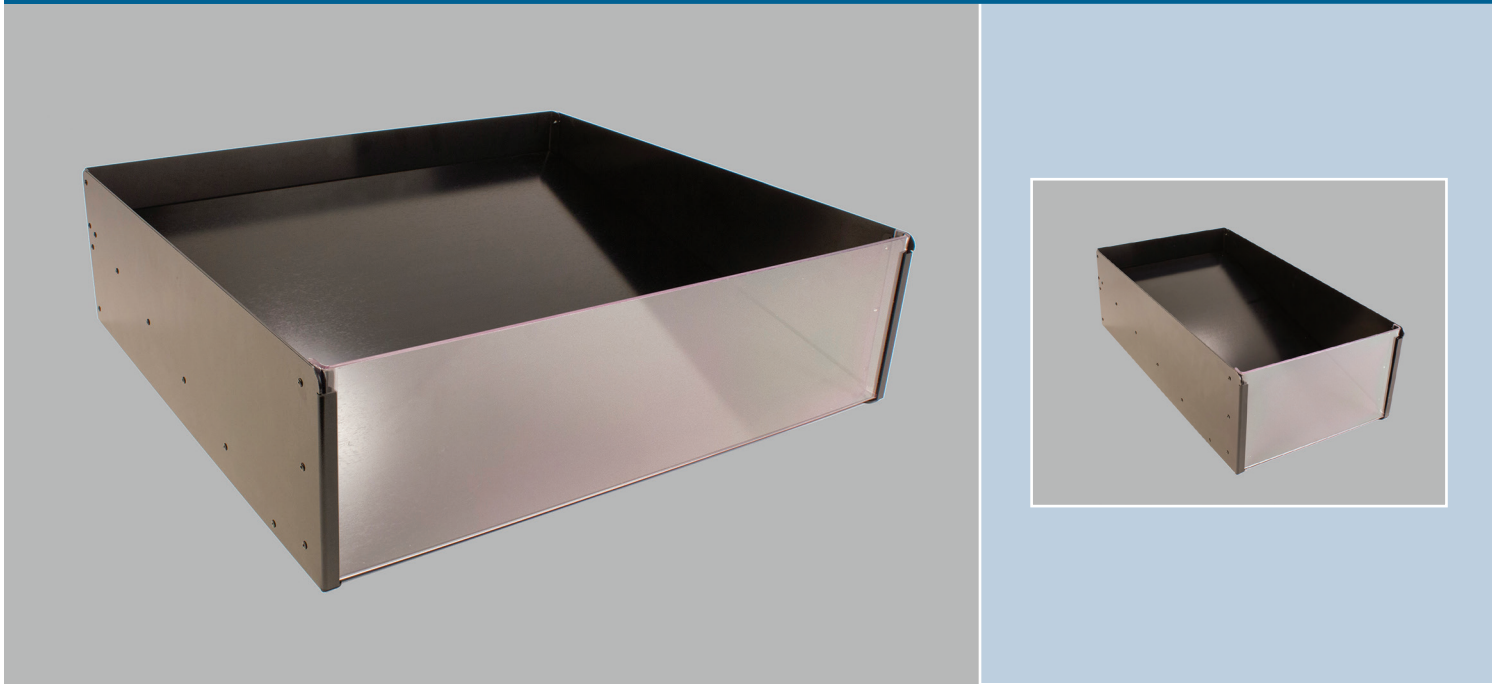


# Fresh-Fit<sup>®</sup> Aluminum Gravity-Feed Bins



## Features and Benefits

- ◆ Angled design facilitates first-in, first-out replenishment and keeps product toward the front of the bin
- ◆ Great for merchandising salad, mushrooms and specialty items
- ◆ Clear front product stop provides visibility to product
- ◆ Can be used to transport product
- ◆ Available in two sizes: 24" width and 12" width
- ◆ Coated aluminum for long-term solution

## Gravity-feed design keeps product toward the front

Merchandise salad, mushrooms and specialty items with Fresh-Fit<sup>®</sup> Aluminum Gravity-Feed Bins. The angled design facilitates first-in, first-out replenishment and keeps product toward the front of the bin for easy access.

Product is easily visible behind the clear front product stop. Use in cases or fit into the Fresh-Fit<sup>®</sup> Convertible Flat Rack; can also be used to transport product.

## Specifications

Item No.	Dimensions	Finish	Pack
9923110004	24" W x 22" D x 6.75" H	Black	1
9923110005	24" W x 12" D x 6.75" H	Black	1

20190221

For more information,  
call **800.422.2547**  
or visit [www.siffron.com](http://www.siffron.com)

**siffron**<sup>™</sup>  
always on